

Martin Yale J1811 Padding Press

Instruction Manual



Provided By

MyBinding.com
When Image Matters.

1.0 Introduction

Thank you for selecting the Martin Yale Model J1811 Jiffy Padding Press. We recommend that you familiarize yourself with the Jiffy Padding Press by carefully reading these instructions. Thorough understanding of the information contained within these instructions will help to eliminate most operator associated errors and ensure years of trouble-free performance.

2.0 Assembly

- 2.1 Locate all loose parts in the package (refer to parts list and diagram).
- 2.2 Mount the door handle using the two sets of screws and nuts supplied.
- 2.3 Mount the paper clamps to the sides with the knobs and washers as shown in the diagram. The rubber tips on the thumbscrews face downward and the nylon washers go between the knobs and side frames.

3.0 Operation

NOTE: For best results, all material should be jogged before padding. *Martin Yale Model 400 or 4200 Jogger* is recommended.

- 3.1 Drop the door in place; the bottom edge into the slot on the Frame and the top edge over the Tie Rod.
- 3.2 Square the paper into the press against the door. Place the pressure plate on the top of the paper stack against the door.
- 3.3 Lower the Paper clamps to the pressure plate and tighten the hand knobs. Use the thumbscrews to apply additional pressure. **Do not use tools such as wrenches or pliers!**
- 3.4 Remove the door and apply padding compound to the facing edge of the paper stack. When dry, release the clamps to remove pad.
- 3.5 **For Carbonless Paper**
Pressure plate is constructed so that it can be set on the edge of the paper for little penetration or moved away from the edge so that the carbonless padding compound can penetrate further into the sheet. If you are doing snap-outs in carbonless forms, you can move the pressure plate in about 1/4 " and the padding compound will penetrate just as well as if you used a tipping machine.

4.0 Maintenance

Clean unit after use with warm, soapy water. Do not use the same brush for regular and carbonless padding compounds. A paper liner can be used to minimize clean up.



251 Wedcor Drive
Wabash, IN 46992

Phone (260) 563-0641

Fax # (260) 563-4575

www.martinyale.com

M-S027082

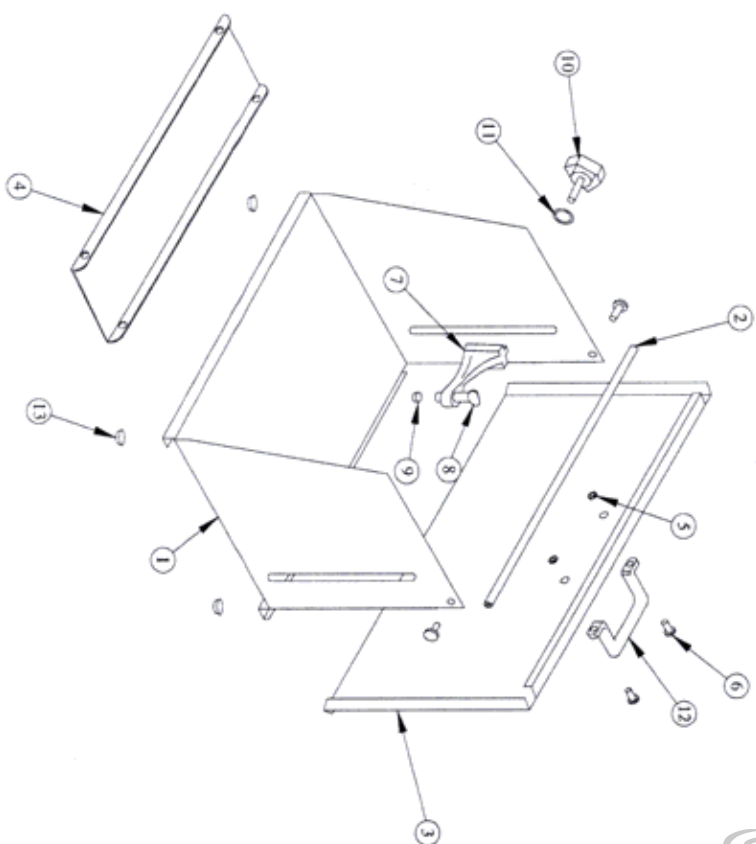
Revised 10/00



Parts List Model J1811

| Item # | Part # | Qty. | Description |
|-----------|-----------|------|--------------------------|
| 1 | W-O181101 | 1 | Frame |
| 2 | W-O181104 | 1 | Tie Rod |
| 3 | W-O181102 | 1 | Door |
| 4 | W-O181103 | 1 | Pressure Plate |
| 5 | M-S007008 | 4 | 10-32 Nuts |
| 6 | M-S001022 | 2 | 10-32x3/8 Machine Screws |
| 7 | M-S181105 | 2 | Padding Press Clamps |
| 8 | M-S005006 | 2 | ¼ 20x2 Thumb Screws |
| 9 | M-S030016 | 2 | ¼ Rubber Tips |
| 10 | M-S032069 | 2 | Padding Press Knobs |
| 11 | M-S008011 | 2 | ¼ x ¼ Nylon Washer |
| 12 | M-S037380 | 1 | Door Handle |
| 13 | M-S030001 | 4 | Rubber Foot |
| Not Shown | M-S027082 | 1 | Instruction Manual |

Parts Diagram



We Have it All...



MyBinding.com *When Image Matters.*

Guaranteed Lowest Prices on an
Endless Selection of Binding Systems, Laminators,
Paper Shredders, Supplies and Accessories.

We have you covered with Expert Advice
and Support. Our popular blog keeps you up to
date on the latest tips and techniques to make
your most important binding and laminating
tasks a success.

Call Us Today

1-800-944-4573

Our Trusted Partners

GBC / Ibico
Fellowes
Powis Fastback
Unibind
Akiles
Renz
Tamerica
Rhin-O-Tuff
DFG

Pro-Bind
Martin Yale
MBM
Formax
Intimus
Dahle
HSM
Standard
Xyron

Challenge
Lasko-Wizer
GBC Shredmaster
Avery
Wilson Jones
Cardinal
Samsill
Universal



- BINDING MACHINES
- BINDING SUPPLIES
- LAMINATORS
- I.D. ACCESSORIES
- BOARDS & EASELS
- PAPER SHREDDERS
- XYRON LAMINATORS
- COIL BINDING MACHINES
- UNIBIND BINDING MACHINES
- FASTBACK BINDING EQUIPMENT
- PAPER FOLDING MACHINES
- LAMINATING POUCHES
- ROTARY TRIMMERS
- CLEAR COVERS
- TWIN LOOP WIRE
- REGENCY COVERS
- PLASTIC BINDING COVERS
- VELOBIND BINDING MACHINES
- PAPER HANDLING EQUIPMENT
- THERMAL BINDING MACHINES
- PROCLICK BINDING SYSTEMS
- COMB BINDING MACHINES
- COMB BINDING SUPPLIES
- WIRE BINDING MACHINES
- POUCH LAMINATORS
- LAMINATING ROLLS
- 3-RING BINDERS
- ROLL LAMINATORS
- VELOBIND SPINES
- PAPER CUTTERS
- PAPER JOGGERS
- LETTER OPENERS
- THERMAL COVERS
- UNIBIND SUPPLIES
- PROCLICK SPINES
- ZIPBIND SPINES
- LINEN COVERS
- SPIRAL COIL
- INDEX TABS