

Formax 402 Series Paper Jogging Machine

Instruction Manual



Provided By

MyBinding.com®
When Image Matters.

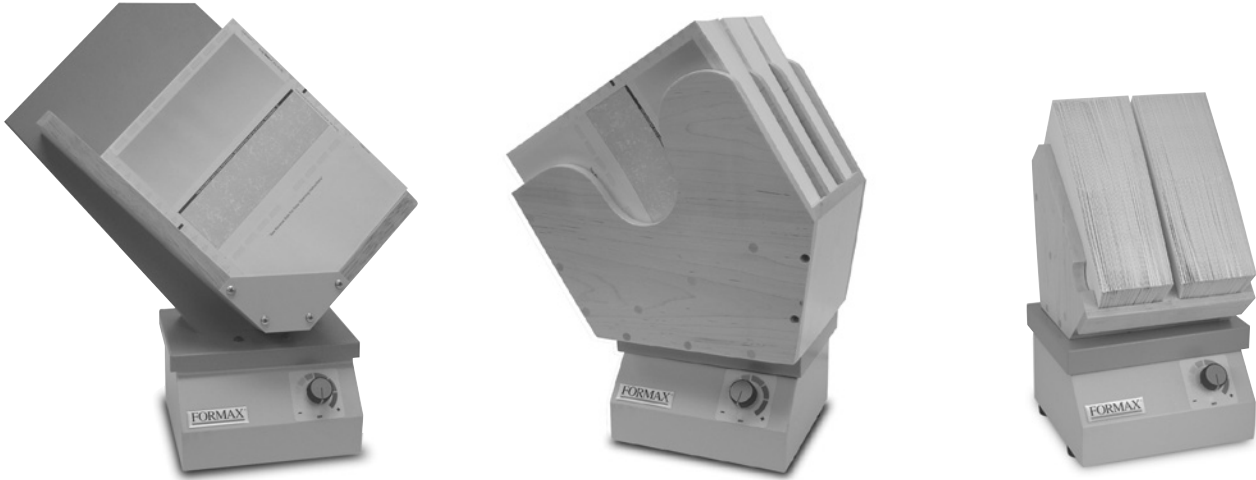
FORMAX[®]

402 Series Joggers

OPERATOR MANUAL
SECOND EDITION

8/2010

TABLE OF CONTENTS



TOPIC	PAGE
INTRODUCTION	1
SPECIFICATIONS	1
INSTALLATION	1
OPERATION	2
TROUBLESHOOTING	2

INTRODUCTION

The Formax 402 Series Joggers are used for aligning paper and dissipating static electricity. An electromagnetic assembly produces a vibrating action, which is transmitted to the deck and rack through a system of flex plates.

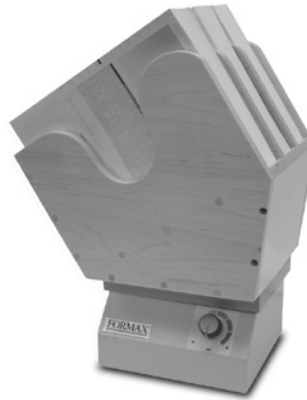
The control assembly consists of a solid-state on-off knob which also serves to control the vibration intensity, up to 4,000 vibrations per minute.

Refer to this Maintenance Manual prior to adjusting or performing service on the jogger.

WARNING: Failure to follow these instructions could result in unsatisfactory jogger performance, machine damage or shortened service life, or personal injury.



FD 402P1



FD 402P3



FD 402E2

	FD 402P1	FD 402P3	FD 402E2
Bin Capacity:	Up to 800 sheets of 20# paper	Up to 1,700 sheets 20#	Up to 1,750 sheets 20#
Bin Size:	3.5" D x 8.75" W x 15.5" L	2.5" D x 3.5" W x 10" L each	7" D x 2.25" W x 11.25" L each
Media Size:	Up to 11" W x 17" L	Up to 8.5" W x 14" L	Up to 4" W x 8" L
Dimensions:	7.75" W x 19" L x 21" H	9.75" W x 14" L x 17.75" H	8.125" W x 8.125" L x 13.125" H
Weight:	28 lbs.	29 lbs.	28 lbs.
Variable Speed:	Up to 4,000 vibrations/minute		
Voltage:	115 Volts (50/60 Hz) / Export 230 Volts (50/60 Hz)		
Safety Certifications:	TUV & CE applied for		

INSTALLATION

Inspect the jogger for damage which may have occurred during shipment. If any damage is found, immediately notify the shipping carrier and your authorized Formax dealer.

Each jogger weighs approximately 30 pounds. Lift the jogger only by the base. Lifting by the bin or top cover may cause damage or injury.

WARNING: The voltage and frequency of the power supply must be as specified on the nameplate. A power supply of another rating may cause damage to the unit.

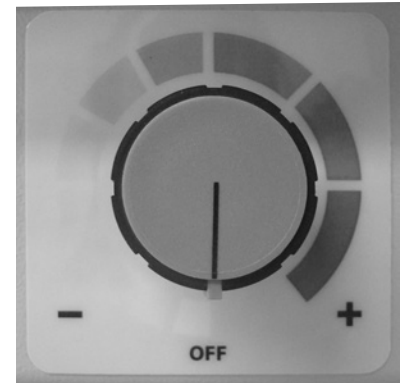
Locate the jogger on a solid support surface. The support must not vibrate while the jogger is operating. The bin or top cover must not be in contact with any rigid object or adjacent surface; it must be free to vibrate.

OPERATION

Place the jogger in its operating location and plug it into a self-governing electrical receptacle.

Place paper, envelopes or checks in the jogger bin(s) and turn the power/vibration control knob clockwise to turn the jogger on and adjust vibration. The vibration amplitude is changed by turning this knob. To turn the jogger off, turn control knob all the way to counter clockwise until it clicks off. **Note:** FE models eith serial # ending in "F" have an on/off switch, the control knob only adjusts the vibration intensity

For best results, documents should be jogged for at least 15 to 30 seconds. For maximum efficiency, Formax recommends a maximum load of 10 pounds for each of the 402 Series models.



TROUBLESHOOTING

PROBLEM:	POSSIBLE CAUSE:	SOLUTION:
Unit does not operate	Defective control knob Shorted wiring, loose connection, no power to unit	Replace control knob Repair
Unit has power but will not vibrate	Unit in contact with rigid object or adjacent surface Defective controller Defective flex plates	Isolate unit Replace controller Replace flex plates
Excessive noise when operating	Armature and core assemblies making contact	Air gap spacers may need to be replaced or adjusted

We Have it All...



MyBinding.com *When Image Matters.*

Guaranteed Lowest Prices on an
Endless Selection of Binding Systems, Laminators,
Paper Shredders, Supplies and Accessories.

We have you covered with Expert Advice
and Support. Our popular blog keeps you up to
date on the latest tips and techniques to make
your most important binding and laminating
tasks a success.

Call Us Today

1-800-944-4573

Our Trusted Partners

GBC / Ibico
Fellowes
Powis Fastback
Unibind
Akiles
Renz
Tamerica
Rhin-O-Tuff
DFG

Pro-Bind
Martin Yale
MBM
Formax
Intimus
Dahle
HSM
Standard
Xyron

Challenge
Lasko-Wizer
GBC Shredmaster
Avery
Wilson Jones
Cardinal
Samsill
Universal



BINDING MACHINES
BINDING SUPPLIES
LAMINATORS
I.D. ACCESSORIES
BOARDS & EASELS
PAPER SHREDDERS
XYRON LAMINATORS
COIL BINDING MACHINES
UNIBIND BINDING MACHINES
FASTBACK BINDING EQUIPMENT
PAPER FOLDING MACHINES
LAMINATING POUCHES
ROTARY TRIMMERS
CLEAR COVERS
TWIN LOOP WIRE
REGENCY COVERS
PLASTIC BINDING COVERS
VELOBIND BINDING MACHINES
PAPER HANDLING EQUIPMENT
THERMAL BINDING MACHINES
PROCLICK BINDING SYSTEMS
COMB BINDING MACHINES
COMB BINDING SUPPLIES
WIRE BINDING MACHINES
POUCH LAMINATORS
LAMINATING ROLLS
3-RING BINDERS
ROLL LAMINATORS
VELOBIND SPINES
PAPER CUTTERS
PAPER JOGGERS
LETTER OPENERS
THERMAL COVERS
UNIBIND SUPPLIES
PROCLICK SPINES
ZIPBIND SPINES
LINEN COVERS
SPIRAL COIL
INDEX TABS

