

Akiles EcoBind C Comb Binding Machine

Instruction Manual



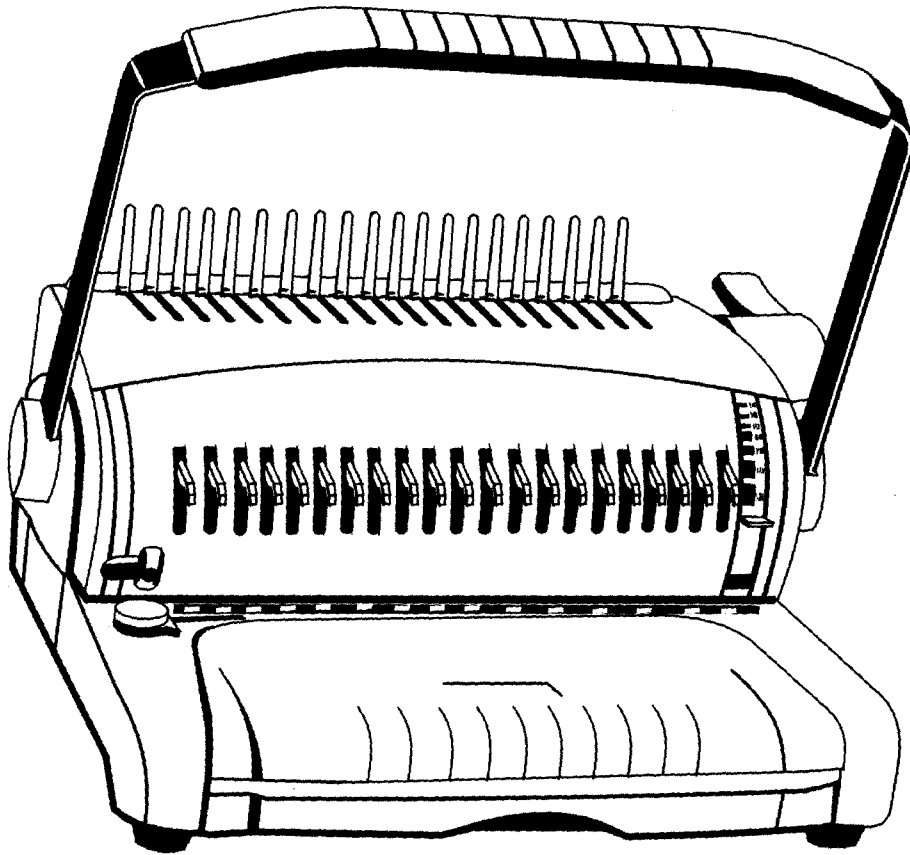
Provided By

MyBinding.com
When Image Matters.



AKILES

**EcoBind-C COMB BINDING SYSTEM
OPERATIONAL MANUAL**



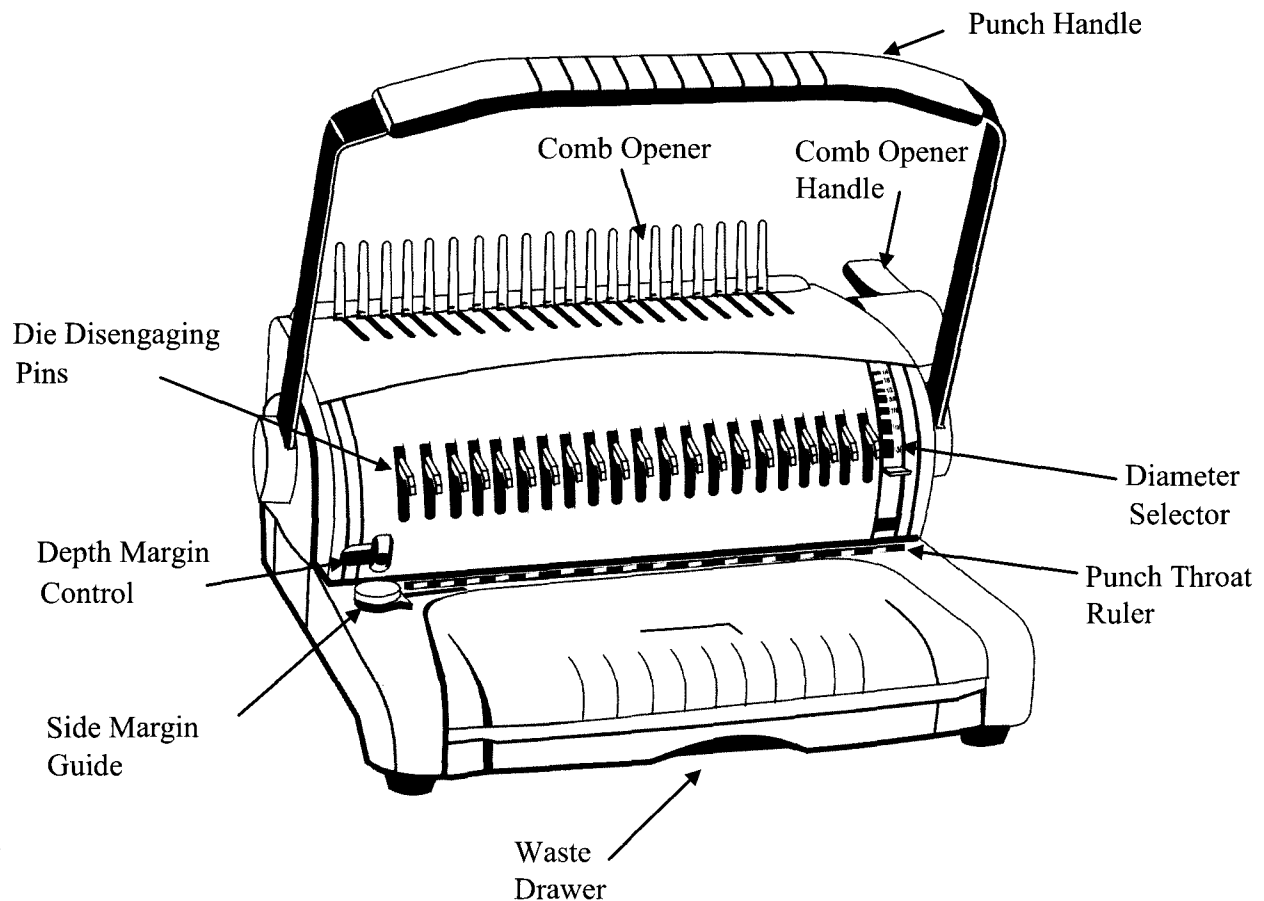
INTRODUCTION

Congratulations on the purchase of your new **EcoBind**, a reliable punching machine. Your **EcoBind** was designed with a unique full range of functions, safety features and premium quality components to guarantee an effortless punching experience, as well as many years of trouble-free service.

IMPORTANT

We recommend that you take a moment to familiarize yourself with the functions of your new **EcoBind**. Make sure you read all the features and safety instructions, and follow these guidelines to install, operate and maintain your **EcoBind**. You will find that with just a little practice, anyone can achieve professional results.

FEATURES



ASSEMBLY

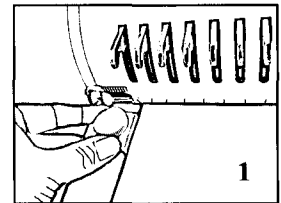
- 1) Place your new **EcoBind** on top of a sturdy work table.
- 2) Your **EcoBind** is ready for use, no assembly is required.

PUNCHING

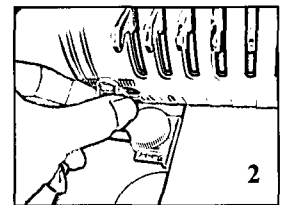
IMPORTANT:

- Always do test punch with waste paper to make sure document will be properly punched (Margins are evenly centered and holes are not being partially perforated).
- Maximum single punching: 20 Sheets of 20lbs paper.
- Comfortable single punching: 12-15 sheets of 20lbs paper.
Never attempt to punch more than maximum number of sheets allowed. Doing so may cause severe damage to the equipment and fatigue to the operator.
- Punch inner sheets and covers separately as side margin may vary.
- Re-align margins for oversize covers.
- Empty waste bin regularly.

1. Align the Side Margin Guide to the correct position according to the sheet or cover size selected. Note: Use ruler guide for easier alignment. **See picture 1**



2. Slide Depth Margin Control to the desired position (1, 2 or 3)
See Picture 2



Tip: Use position 1 for small size books: 1/2" comb size or smaller

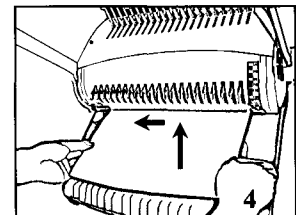
Use position 2 for mid size books: 9/16" to 1" comb sizes

Use position 3 for large size books: 1-1/8 comb size or bigger

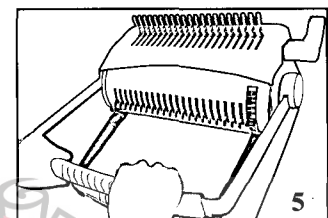
3. Pull out Disengagement pins to avoid partially perforated holes (if needed). **See Picture 3**



4. Insert sheets into the Punch Throat. **See Picture 4**
Note: Make sure document is inserted all the way in and slid against side margin.



5. Pull Punch Handle down for punching action. **See Picture 5**

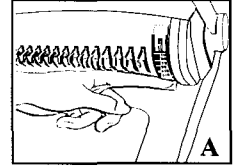


6. Repeat steps 4-5 until all sheets have been punched.

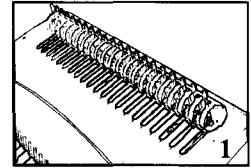
BINDING

Tip. (optional) Select comb size using diameter selector.

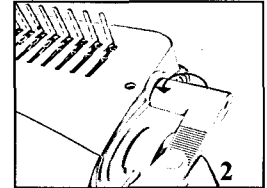
See picture A



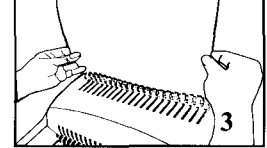
1. Place pre-selected comb behind Comb Opener Fingers.
Note: The comb opening side should be upward. **See picture 1**



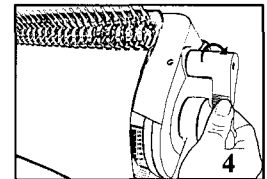
2. Gently rotate Comb Opener Handle counter-clockwise to open comb.
See picture 2
Note: Open comb sufficiently to allow pages and covers to be inserted.



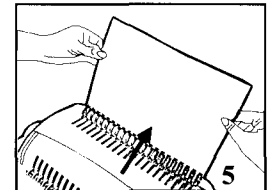
3. Align and insert punched pages onto comb fingers. **See picture 3**



4. Gently rotate Comb Opener Handle clockwise to close comb.
See picture 4



5. Lift the bound document upward, and remove it from Comb Opener Fingers. **See picture 5**



Congratulations, the comb binding is complete

WARRANTY POLICY

Your **EcoBind** has a warranty of one year from date of purchase. In the event of a manufacturer's defect, your distributor (at option) will repair or replace it. Important: This warranty does not cover damages due to improper use or mistreatment of the unit, including any extraordinary event leading to the damage of the machine, whether it is reversible or not.

If your **EcoBind** is not punching properly, first follow the corrective actions within this manual. If the problem persists, please contact your dealer for further instructions. Never try to repair the unit by yourself. The **EcoBind** does not contain any part that can be serviced by the operator. Please have your machine's serial number and the purchase date ready. If the machine must be returned to your distributor, it is your responsibility to properly pack and ship it, as any damages incurred during its transportation are not covered by our warranty policy.

We Have it All...



MyBinding.com *When Image Matters.*

Guaranteed Lowest Prices on an
Endless Selection of Binding Systems, Laminators,
Paper Shredders, Supplies and Accessories.

We have you covered with Expert Advice
and Support. Our popular blog keeps you up to
date on the latest tips and techniques to make
your most important binding and laminating
tasks a success.

Call Us Today

1-800-944-4573

Our Trusted Partners

GBC / Ibico
Fellowes
Powis Fastback
Unibind
Akiles
Renz
Tamerica
Rhin-O-Tuff
DFG

Pro-Bind
Martin Yale
MBM
Formax
Intimus
Dahle
HSM
Standard
Xyron

Challenge
Lasko-Wizer
GBC Shredmaster
Avery
Wilson Jones
Cardinal
Samsill
Universal

- BINDING MACHINES
- BINDING SUPPLIES
- LAMINATORS
- I.D. ACCESSORIES
- BOARDS & EASELS
- PAPER SHREDDERS
- XYRON LAMINATORS
- COIL BINDING MACHINES
- UNIBIND BINDING MACHINES
- FASTBACK BINDING EQUIPMENT
- PAPER FOLDING MACHINES
- LAMINATING POUCHES
- ROTARY TRIMMERS
- CLEAR COVERS
- TWIN LOOP WIRE
- REGENCY COVERS
- PLASTIC BINDING COVERS
- VELOBIND BINDING MACHINES
- PAPER HANDLING EQUIPMENT
- THERMAL BINDING MACHINES
- PROCLICK BINDING SYSTEMS
- COMB BINDING MACHINES
- COMB BINDING SUPPLIES
- WIRE BINDING MACHINES
- POUCH LAMINATORS
- LAMINATING ROLLS
- 3-RING BINDERS
- ROLL LAMINATORS
- VELOBIND SPINES
- PAPER CUTTERS
- PAPER JOGGERS
- LETTER OPENERS
- THERMAL COVERS
- UNIBIND SUPPLIES
- PROCLICK SPINES
- ZIPBIND SPINES
- LINEN COVERS
- SPIRAL COIL
- INDEX TABS

