

# Akiles i-Wire

## Instruction Manual



Provided By

**MyBinding**.com®  
*When Image Matters.*

# *iWire* OPERATIONAL MANUAL

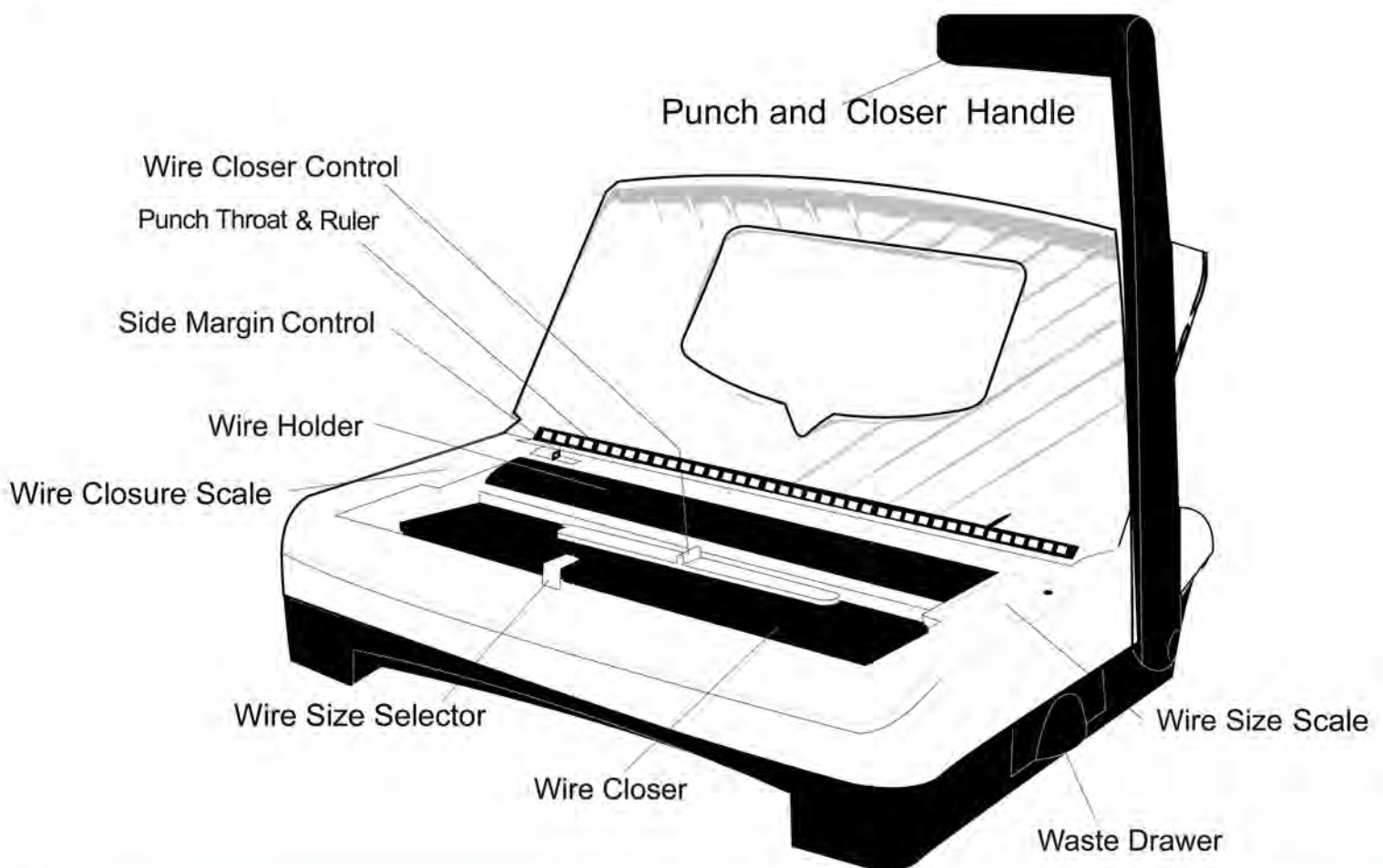
## INTRODUCTION

CONGRATULATIONS ON THE PURCHASE OF YOUR NEW *iWire*, A MODERN, PRACTICAL AND RELIABLE PUNCH AND BINDING MACHINE FOR WIRE BINDING. YOUR *iWire* WAS DESIGNED WITH A FULL RANGE OF FUNCTIONS AND PREMIUM QUALITY COMPONENTS TO GUARANTEE AN EFFORTLESS AND PROFESSIONAL BIND AS WELL AS MANY YEARS OF TROUBLE-FREE SERVICE.

## IMPORTANT

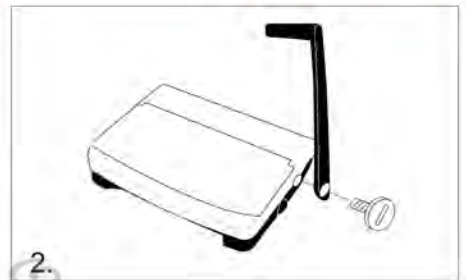
WE RECOMMEND THAT YOU TAKE A FEW MINUTES TO FAMILIARIZE YOURSELF WITH THE FUNCTIONS OF YOUR NEW *iWire*. YOU WILL FIND THAT WITH JUST A LITTLE PRACTICE, ANY PERSON CAN ACHIEVE PROFESSIONAL RESULTS.

## FEATURES



## ASSEMBLY

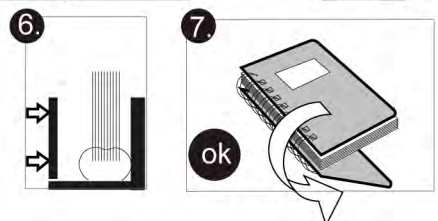
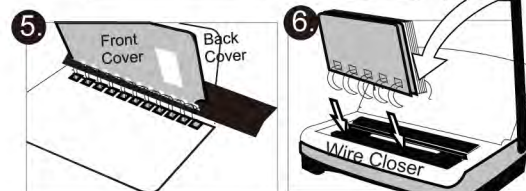
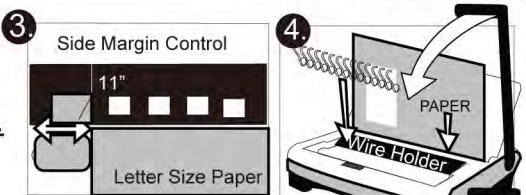
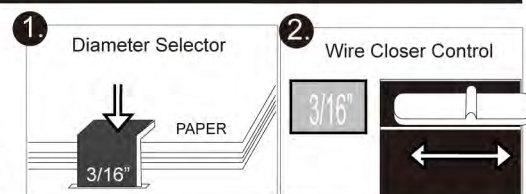
1. Place your new *iWire* on top of a sturdy work table.
2. Remove the screw from punch axle counter clockwise as indicated, connect the punch handle in a vertical position onto the punch axle. Tighten-back the screw clockwise.



# WIRE BINDING

## SET-UP INSTRUCTIONS (STEPS 1-4a)

- 1) Based on document thickness you must first determine the optimal wire diameter size needed. To do this, insert your full unbound document into the Diameter Selector. See picture 1
- 2) Next, based on the selected wire diameter size, pre-set the Wire Closer opening. To do so, slide the Wire Closer Control to the matching wire diameter size on window. See picture 2.
- 3) Based on document length, you must now adjust the side margin for an evenly centered punch. To do so, press and slide Side Margin Control. See Picture 3.



- Hint:** We recommend for you to test punch some waste paper and readjust the Side Margin Control as needed.
- 4a) Insert selected wire element into wire holder. Doing so will allow for easier insertion of sheets after each punch. See picture 4

## PUNCHING & CLOSING (STEPS 4b-7)

- 4b) Insert sheets and pull handle forward to punch. See picture 4  
**Important:** Make sure sheets are fully inserted and slid against the side margin.
- 5) Insert pages into wire element as shown. See picture 5  
**Hint:** Insert document pages facing up from last to first, then insert front cover, then insert back cover (inside of back cover should be facing up).
- 6a) Release the wire element along with your inserted sheets from the wire holder. Place document to be bound inside wire closer with the opening of the wire element facing down. See picture 6
- 6b) Pull handle forward to close. See picture 6
- 7) Remove bound book & flip back cover to close book. See picture 7

# TECHNICAL INFORMATION

Size	Wire 3 : 1 (3 HOLES PER INCH)	Wire 2 : 1 (2 HOLES PER INCH)
Binding Format	11" = 32 Holes	11" = 21 Holes
	8.5" = 25 Holes	8.5" = 17 Holes
	A4 = 34 Holes	A4 = 23 Holes
	A5 = 25 Holes	A5 = 16 Holes

Capacity & Diameter					
Sheets (20 lbs)	Diameter Inch	mm	Sheets (20 lbs)	Diameter Inch	mm
<b>WIRE 3:1</b>			<b>WIRE 2:1</b>		
20	3/16	4.5	140	5/8	16
30	1/4	6	160	3/4	20
50	5/16	8	190	7/8	22
60	3/8	9	220	1	25
80	7/16	10	280	1-1/4	32
100	1/2	12			
120	9/16	15			

# WARRANTY POLICY

**YOUR iWire HAS A WARRANTY OF ONE YEAR FROM DATE OF PURCHASE. IN THE EVENT OF A MANUFACTURER'S DEFECT, YOUR DISTRIBUTOR (AT OPTION) WILL REPAIR OR REPLACE IT. IMPORTANT: THIS WARRANTY DOES NOT COVER DAMAGES DUE TO IMPROPER USE OR MISS TREATMENT OF THE UNIT, INCLUDING ANY EXTRAORDINARY EVENT LEADING TO THE DAMAGE OF THE MACHINE, WHETHER IT IS REVERSIBLE OR NOT.**

**IF THE iWire IS NOT WORKING PROPERLY, FIRST FOLLOW THE CORRECTIVE ACTIONS ABOVE. IF THE PROBLEM PERSISTS, PLEASE CONTACT YOUR DEALER FOR FURTHER INSTRUCTIONS. PLEASE HAVE YOUR MACHINE'S SERIAL NUMBER AND THE PURCHASE DATE READY. IF THE MACHINE MUST BE RETURNED TO YOUR DISTRIBUTOR, IT IS YOUR RESPONSIBILITY TO PROPERLY PACK AND SHIP IT, AS ANY DAMAGES INCURRED DURING ITS TRANSPORTATION ARE NOT COVERED BY OUR WARRANTY POLICY.**

# We Have it All...



## **MyBinding.com** *When Image Matters.*

**Guaranteed Lowest Prices** on an  
Endless Selection of Binding Systems, Laminators,  
Paper Shredders, Supplies and Accessories.

**We have you covered** with Expert Advice  
and Support. Our popular blog keeps you up to  
date on the latest tips and techniques to make  
your most important binding and laminating  
tasks a success.

**Call Us Today**

**1-800-944-4573**

### **Our Trusted Partners**

GBC / Ibico  
Fellowes  
Powis Fastback  
Unibind  
Akiles  
Renz  
Tamerica  
Rhin-O-Tuff  
DFG

Pro-Bind  
Martin Yale  
MBM  
Formax  
Intimus  
Dahle  
HSM  
Standard  
Xyron

Challenge  
Lasko-Wizer  
GBC Shredmaster  
Avery  
Wilson Jones  
Cardinal  
Samsill  
Universal



BINDING MACHINES  
BINDING SUPPLIES  
LAMINATORS  
I.D. ACCESSORIES  
BOARDS & EASELS  
PAPER SHREDDERS  
XYRON LAMINATORS  
COIL BINDING MACHINES  
UNIBIND BINDING MACHINES  
FASTBACK BINDING EQUIPMENT  
PAPER FOLDING MACHINES  
LAMINATING POUCHES  
ROTARY TRIMMERS  
CLEAR COVERS  
TWIN LOOP WIRE  
REGENCY COVERS  
PLASTIC BINDING COVERS  
VELOBIND BINDING MACHINES  
PAPER HANDLING EQUIPMENT  
THERMAL BINDING MACHINES  
PROCLICK BINDING SYSTEMS  
COMB BINDING MACHINES  
COMB BINDING SUPPLIES  
WIRE BINDING MACHINES  
POUCH LAMINATORS  
LAMINATING ROLLS  
3-RING BINDERS  
ROLL LAMINATORS  
VELOBIND SPINES  
PAPER CUTTERS  
PAPER JOGGERS  
LETTER OPENERS  
THERMAL COVERS  
UNIBIND SUPPLIES  
PROCLICK SPINES  
ZIPBIND SPINES  
LINEN COVERS  
SPIRAL COIL  
INDEX TABS